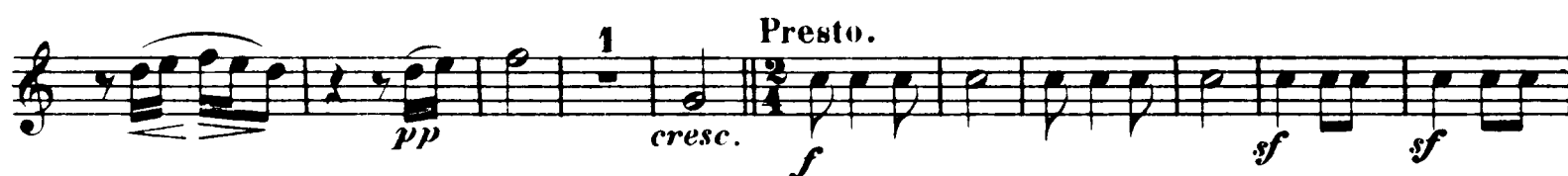


Ludwig van Beethoven
King Stephan, Op. 117

CORNO I in Es.

Andante con moto.



Beethoven — King Stephan Overture

2

CORNO I.

3 C 1 2 3 4 5 6

cresc. cresc. *f sf sf sf sf sf sf sf*

7 1 2 3 4 5 6 7

sf sf sf sf sf sf sf sf

ff

Tempo I. 3 D 13 Cor. II. 14 15

f f

p cresc.

f ff dim. cresc. f sf

ritard. Presto.

sf sf p dolce

1 2 3 4 5 6

cresc.

7 8 9 10 11 12 13 14 15 16

17 E *f piu f ff sf sf*

1 1

sf sf sf sf

11 Ob Cl. Fag. 12 13

ff dim.

Beethoven — King Stephan Overture

CORNO

3

8 *ff* 9 *p cresc.*

F 1 2 3 4 5 6 7 *sf sf sf sf sf sf sf sf*

1 2 3 4 5 6 7 8 9 10 11 *sf sf sf sf sf sf sf sf sempre più f*

12 13 14 15 *ff*

Tempo I. 1 *dolce* **Presto.** *Cor. III. IV* 21 22 *f più f ff*

G *sf sf sf sf sf sf sf sf*

sf sf sf sf sf sf sf sf

1 *sf sf sempre più f sempre stacc.*

H *ff string. p*

ff p sf sf sf sf sf

1 1

Andante con moto.

The image displays a musical score for a piece, likely a symphony or concerto, featuring a variety of musical notations and dynamics. The score is written on ten staves, with the first two staves marked 'Andante con moto.' and the remaining eight staves marked 'Presto.'.

Andante con moto. Section:

- Staff 1:** Features a melody with a forte (*f*) dynamic, marked with a '2' above the staff.
- Staff 2:** Continues the melody with a forte (*f*) dynamic, marked with a '3' above the staff.
- Staff 3:** Features a melody with a forte (*f*) dynamic, marked with a '4' above the staff.
- Staff 4:** Features a melody with a forte (*f*) dynamic, marked with a '5' above the staff.
- Staff 5:** Features a melody with a forte (*f*) dynamic, marked with a '6' above the staff.
- Staff 6:** Features a melody with a forte (*f*) dynamic, marked with a '7' above the staff.
- Staff 7:** Features a melody with a forte (*f*) dynamic, marked with a '4' above the staff.
- Staff 8:** Features a melody with a forte (*f*) dynamic, marked with a '3' above the staff.
- Staff 9:** Features a melody with a forte (*f*) dynamic, marked with a '1' above the staff.
- Staff 10:** Features a melody with a forte (*f*) dynamic, marked with a '1' above the staff.

Presto. Section:

- Staff 11:** Features a melody with a piano (*p*) dynamic, marked with a '1' above the staff.
- Staff 12:** Features a melody with a piano (*p*) dynamic, marked with a '2' above the staff.
- Staff 13:** Features a melody with a piano (*p*) dynamic, marked with a '3' above the staff.
- Staff 14:** Features a melody with a piano (*p*) dynamic, marked with a '4' above the staff.
- Staff 15:** Features a melody with a piano (*p*) dynamic, marked with a '5' above the staff.
- Staff 16:** Features a melody with a piano (*p*) dynamic, marked with a '6' above the staff.
- Staff 17:** Features a melody with a piano (*p*) dynamic, marked with a '7' above the staff.
- Staff 18:** Features a melody with a piano (*p*) dynamic, marked with a '8' above the staff.
- Staff 19:** Features a melody with a piano (*p*) dynamic, marked with a '9' above the staff.
- Staff 20:** Features a melody with a piano (*p*) dynamic, marked with a '10' above the staff.

The score includes various musical notations such as notes, rests, and dynamic markings (*f*, *p*, *pp*, *cresc.*, *dolce*, *piu f*). The tempo changes from 'Andante con moto.' to 'Presto.' between the 10th and 11th staves.

Beethoven — King Stephan Overture

2

CORNO II.

C 1 2 3 4 5 6 7

cresc.

sf 1 2 3 4 5 6 7

sf 1 2 3 4 5 6 7

ff

Tempo I.

3 **D** 9

cresc. dolce

cresc.

ritard. dim.

f *ff* *cresc.*

Presto.

f *sf* *sf* *sf* *p*

dolce *cresc.*

1

2 3 4 5 6 7 8 9 10 11

12 13 14 15 16 17

f *più f*

E

ff *sf* *sf* *sf* *sf* *sf*

1 1

f

11 *Ob. Cl. Fag.*

ff *dim.* 12 13

Beethoven — King Stephan Overture

CORNO II.

1

8 9

p *ff* *cresc.*

F

1 2 3 4 5 6 7

8 9 10 11 12 13 14 15

sempre più f

Tempo I.

ff *p* *dolce*

Presto. Cor. III. IV.

20 21 22

f *p* *ff*

G

1

sempre più f *sempre stacc.*

H

ff string.

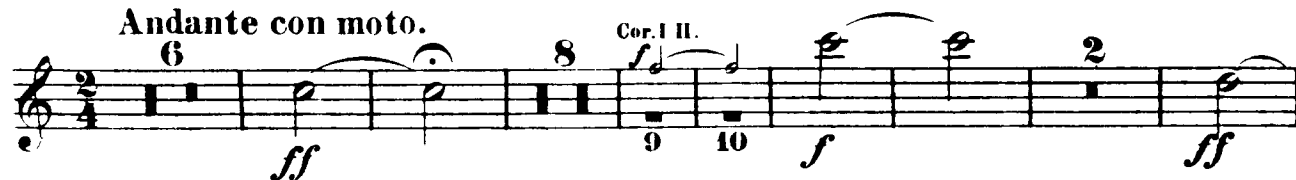
ff *p* *ff* *p* *ff* *ff*

1 1

Ludwig van Beethoven
King Stephan, Op. 117

CORNO III in C.

Andante con moto.



Presto.



Beethoven — King Stephan Overture

CORNO III.

3

Presto.

29 Cor. I. II.

30 31 32 33

E

ff sf sf sf sf sf

3 3 1 37 Cor. I. II.

38 39 ff sf

p pp cresc.

5

F

ff sf sf sf sf sf sf sf sf sf sf sf sf sf sf

4

4

sempre più f

Tempo I. Presto.

4 11 p cresc.

10 11 12 G

Cor. I. II.

28 Cor. I. II.

29 30 f ff string.

2 2 ff sf sf sf sf

1 1

Ludwig van Beethoven
King Stephan, Op. 117

CORNO IV in C.

Andante con moto.

